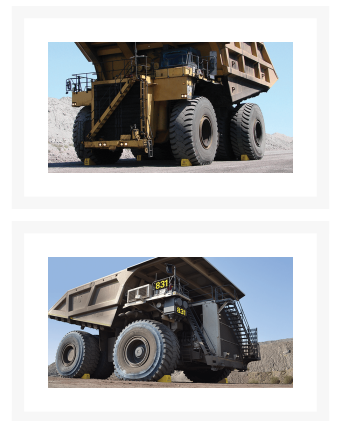


# Heavy-Duty Wheel Chock, 95-165 in. Tires, Up to 800 Ton Capacity - MC3011

## Product Images



## Short Description

- Optional studs available for snow and ice
- ANSI compliant color illustrations on proper chocking and wheel chock placement in English
- Rated for vehicles with a gross operating weight up to 1,600,000 lbs., and tire sizes up to 165 in. diameter
- Maximum rated payload of 400 tons
- Recessed carrying handle on the backside of the chock
- Replaceable rubber anti-slip traction pads
- Resistant to oils, fuels, and solvents

- Approved and being used by Caterpillar and mines worldwide
- Meets MSHA specifications
- Mounting hole for ropes, chains or brackets

## Description

---

The Checkers™ heavy-duty MC3011 wheel chocks weigh only 32 lbs, making them 24% lighter than the industry standard. They are manufactured with highly durable, lightweight high-density polyethylene (HDPE) for ground vehicles and they feature a larger base that makes them ideal for use with heavy equipment such as haul trucks, loaders, and cranes. MC3011 wheel chocks are for mine haul trucks with tire sizes up to 165 in. (419.1 cm) in diameter and gross vehicle operating weight up to 1,600,000 lbs. (725,748 kg). A minimum of four MC3011 wheel chocks must be used for gross vehicle operating weights from 855,000 - 1,600,000 lbs. A maximum rated payload of 400 tons.

## Specifications

---

Model No	MC3011
UPC	812542020022
Brand	Checkers Safety™
Color	Yellow
Quantity Included	1
Pallet Quantity	20
Max Operating Weight	1,600,000 lbs. OR 800 tons
Recommended Tire Diameter	165 in.
Length (Inches)	24
Width (Inches)	14
Height (Inches)	15.25
Sold As	Single

## Prop 65

---

**⚠️WARNING:** This product can expose you to chemicals including Carbon Black, which is known to the State

of California to cause cancer and birth defects or other reproductive harm. For more information go to [www.P65Warnings.ca.gov](http://www.P65Warnings.ca.gov).