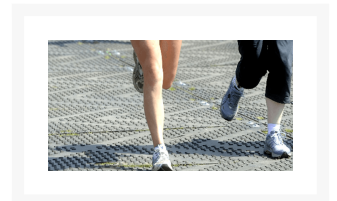
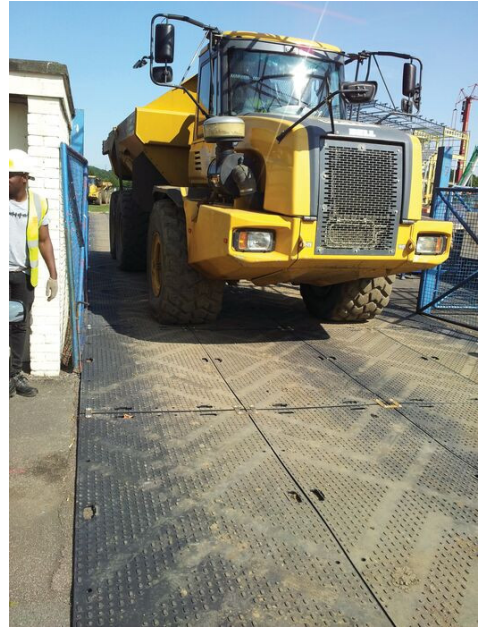


4' x 8' Ground Protection Mat, 80 Ton Load Capacity, Black, HDPE, LibertyMAT® - LIB48

Product Images





Short Description

- 100% recycled high-density polyethylene (HDPE)
- Load bearing capacity up to 80 tons*
- Unique Chevron Traction® surface on both sides for maximum grip
- Low profile surface option for pedestrian walkways and outdoor events
- Fast and easy to install
- Man-deployable thanks to its lightweight design
- Hand holes for easy maneuverability
- Molds to uneven or undulating ground conditions due to its flexible design
- Various connector options available depending on the requirement
- Textured finish
- Made in the USA
- Reduced freight costs by 30% through elimination of freight overage charge

Description

LibertyMAT® is a market-leading medium-duty ground protection mat designed as an ideal manhandle-able solution in a wide range of applications including temporary roadways, work pads, depot storage areas, or as pedestrian access. Thanks to its flexible design, the mat is able to follow the contours of undulating or sloping ground conditions. LibertyMAT is light in weight and at just 77 lbs (35 kg) it can easily be deployed by a two-person team, making LibertyMAT fast and easy to install. It also doesn't incur overage charges due to its size, saving you money when shipping. LibertyMAT also has strategically positioned hand holes for use ease of handling. The mat features our unique Chevron Traction® surface design on both sides, providing optimal grip and improved forward motion of vehicles. LibertyMAT has a range of connector options available to suit any ground conditions including 4-way connectors, flex connectors and fast fit connectors for quicker installations. *Load bearing capacity is subject to ground conditions. Sizing is subject to a manufacturing variance of +/- 5%

Specifications

Model No	LIB48
UPC	812542021173
Brand	Checkers Safety™
Color	Black
Quantity Included	1
Pallet Quantity	40
Load Capacity	160,000 lbs or 80 Tons
Load Capacity	80
Length (Inches)	96
Width (Inches)	48
Height (Inches)	0.72

Prop 65

⚠️WARNING: This product can expose you to chemicals including Carbon Black, which is known to the State of California to cause cancer and birth defects or other reproductive harm. For more information go to www.P65Warnings.ca.gov.