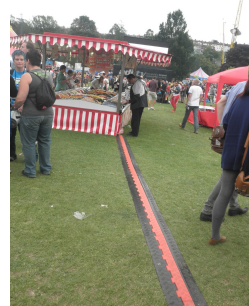
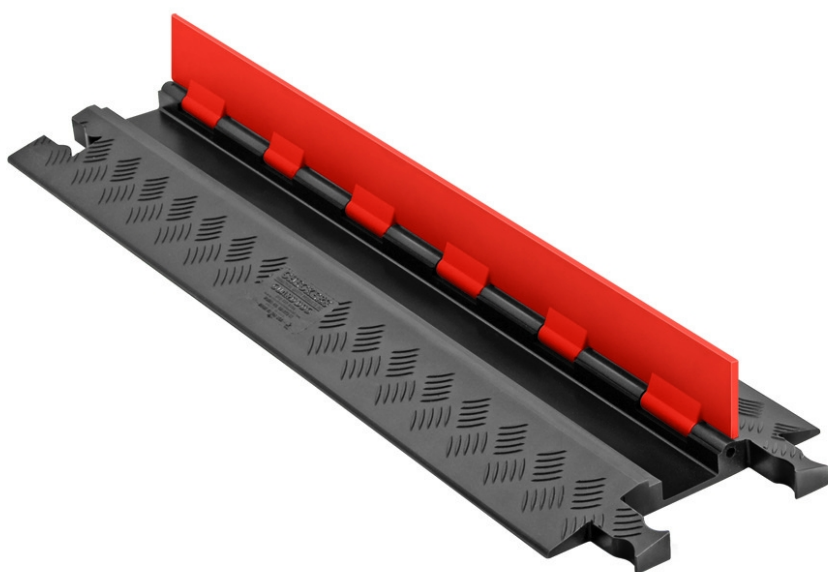




# 1-Channel Low-Profile Guard Dog® Cable Protectors for .75" Lines, Orange Lid/Black Base - GD1X75-ST-O/B

## Product Images



## Short Description

---

- Protects cables and hoses up to .75" outside dia.
- Dog-Bone® Connectors to extend to any desired length
- Reinforced hinged lid for easy cable placement
- With standard ramps
- Patented 5-bar tread surface for maximum traction
- Modular interlocking design for easy setup
- Custom cable protectors are available. [Get a quote here.](#)

## Description

---

Guard Dog® low-profile cable protector models are the most compact top-loading cable protectors on the market, fitting cables up to 0.75" tall and 2.25" wide. These protectors provide a safe and easy crossing for vehicle and pedestrian traffic while still maintaining a high load-bearing capacity for heavy equipment. The low-profile models are available with your choice of standard or ADA/DDA compliant ramps.

Custom cable protectors can be made with different colors and embossed logos. [Get a quote with your specific requirements.](#)

## Specifications

---

Model No	GD1X75-ST-O/B
UPC	812958005743
Brand	Checkers Safety™
Color	Orange Lid / Black Base
Quantity Included	1
Pallet Quantity	72
Load Capacity Per Axle	26000 lbs
Load Capacity Per Tire	13000
Length (Inches)	38.5
Width (Inches)	11
Height (Inches)	1.25
Max Cable Outside Diameter (Inches)	0.75
Number of Channels	1-Channel
Connector Type	Dog Bone Connector
Channel Width	2.25

## Prop 65

---

**⚠️WARNING:** This product can expose you to chemicals including Carbon Black, Titanium Dioxide, Formaldehyde, and Benzyl Butyl Phthalate, which are known to the State of California to cause cancer and birth defects or other reproductive harm. For more information go to [www.P65Warnings.ca.gov](http://www.P65Warnings.ca.gov).