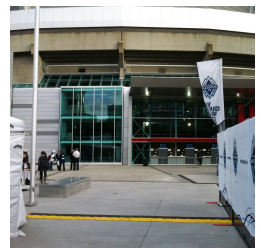
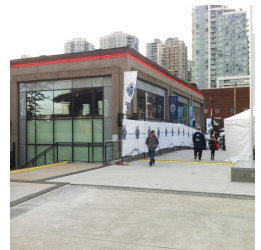
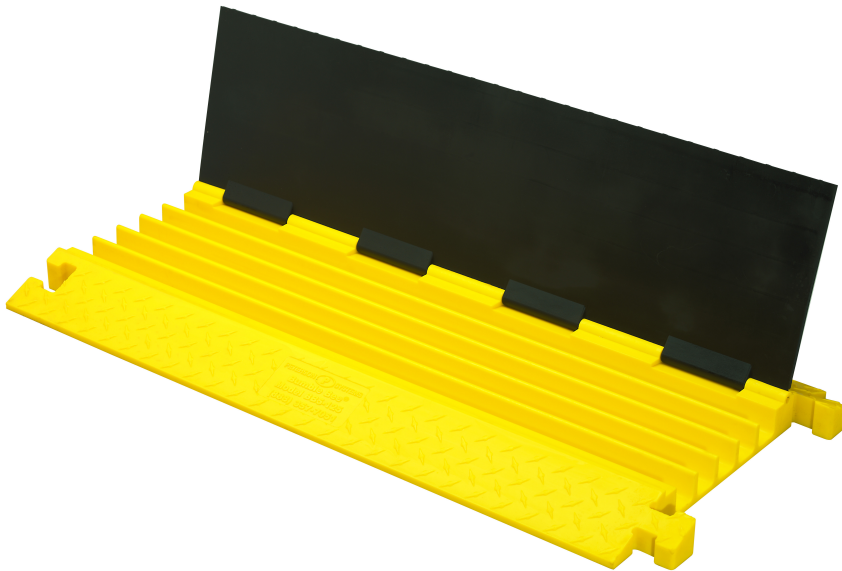


5-Channel Bumble Bee® Cable Protector for 1.25" Lines, T-Connector - BB5-125-T-B/Y

Product Images





Short Description

- Protects cables and hoses up to 1.25" outside dia.
- Available with either patented T-Connectors OR Dog Bone® Connectors to extend to any desired length
- Reinforced hinged lid for easy cable placement
- Modular interlocking design
- Light-duty - works great for general use
- Personalize cable protectors with your logo or colors. [Get a quote here.](#)

Description

If you're placing cables or hoses in an area with high foot traffic, you need to protect them - for your sake as much as the pedestrians. Bumble Bee's 5-Channel Light Duty Cable Protector is up to the task. Featuring T-Connectors for easy expandability, this light-duty, all-weather polyurethane protector is both lightweight and durable.

Thanks to its modular design and reinforced hinged lid, it's easy to set up, and its diamond plate tread surfaces provide maximum traction to help prevent slips, trips and falls. Protects cables and hoses of up to 1.25". Not intended for use in heavy-duty or high load-bearing operations.

Custom cable protectors can be made with different colors and embossed logos. [Get a quote](#) with your specific requirements.

Specifications

Model No	BB5-125-T-B/Y
UPC	812542022118
Brand	Checkers Safety™
Color	Black Lid / Yellow Base
Quantity Included	1
Load Capacity Per Axle	12000 lbs
Load Capacity Per Tire	6000
Length (Inches)	36
Width (Inches)	17.5
Height (Inches)	2
Max Cable Outside Diameter (Inches)	1.25
Number of Channels	5-Channels
Connector Type	T-Connector Connector
Channel Width	1.25

Prop 65

⚠️WARNING: This product can expose you to chemicals including Carbon Black, Titanium Dioxide, Formaldehyde, and Benzyl Butyl Phthalate, which are known to the State of California to cause cancer and birth defects or other reproductive harm. For more information go to www.P65Warnings.ca.gov.