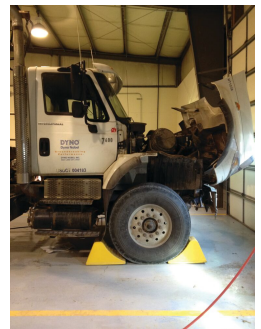


# All-Terrain Heavy-Duty Wheel Chock with Rubber Pad, 75 Ton Capacity, 36-46 in. Tires - AT3514-RP-Y

## Product Images





## Short Description

---

- ANSI compliant color written guidelines on proper chocking procedures
- Complies with SAE-J348, NFPA 1901, and NFPA 1906 Standards
- 3rd party tested for compliance
- Rated for vehicles with a gross operating weight up to 150,000 lbs.
- Resistant to oils, fuels, and solvents
- Recessed carrying handle on the backside of the chock
- Replaceable aluminum traction cleats or rubber pads
- Mounting hole for ropes, chains or brackets
- Safety color visibility
- Available with Bottom Void and Aluminum Ice Cleat (AT3514-AC-Y), Bottom Void and Rubber Pad (AT3514-RP-Y), and to be in compliance with NFPA 1906 a Flat Bottom is Available either with an Aluminum Cleat (AT3514-FBAC-Y) or Rubber Pad (AT3514-FBRP-Y)

## Description

---

The Checkers™ heavy-duty AT3514 wheel chocks for all-terrain ground vehicles are manufactured with highly durable, lightweight high-density polyethylene (HDPE) and they feature replaceable aluminum base plates with posi-grip cleats or anti-slip rubber traction pads. AT3514 wheel chocks are ideal for underground mining equipment, firefighting vehicles, and large utility vehicles. For vehicles with tire sizes up to 46 in. (116.8 cm) diameter and gross vehicle operating weight up to 150,000 lbs. (68,039 kg).

## Specifications

---

Model No	AT3514-RP-Y
UPC	812542020084
Brand	Checkers Safety™
Color	Yellow
Quantity Included	1
Pallet Quantity	40
Max Operating Weight	150,000 lbs. OR 75 tons
Recommended Tire Diameter	46 in.
Length (Inches)	20.5
Width (Inches)	11
Height (Inches)	11.5
Sold As	Single

## Prop 65

---

**⚠️WARNING:** This product can expose you to chemicals including Carbon Black, which is known to the State of California to cause cancer and birth defects or other reproductive harm. For more information go to [www.P65Warnings.ca.gov](http://www.P65Warnings.ca.gov).