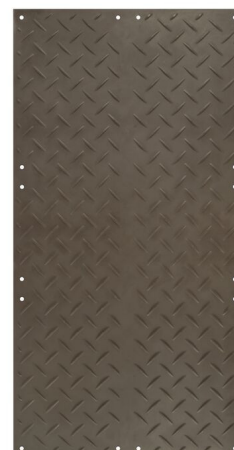
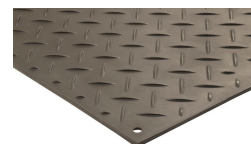




# AlturnaMAT® 4' x 8' Ground Protection Mats, 120 Ton Load Capacity, Black - AM48

## Product Images



## Short Description

- 100% recycled high-density polyethylene (HDPE)

- Diamond cleat tread surface on both sides provides impressive grip
- Optional hand holes for easy maneuverability
- Supports loads up to 120 tons\*
- Available in black or clear
- Contours to different ground conditions due to its flexible design
- Low-profile VersaMat® surface also available
- Mats can be locked together with Turn-A-Links forming a continuous roadway or workable platform
- Limited Lifetime Warranty

## Description

---

AlturnaMAT® is a high load capacity mat boasting an aggressive diamond plate tread design on both sides, and a high load capacity ideal for use over soft or sensitive ground conditions in the construction, civil engineering, groundwork, and events industries. These rugged recycled poly ground mats are made of 0.5in. (12.7 mm) thick polyethylene making them virtually indestructible. AlturnaMATS® can withstand loads of up to 120 tons\*, and its flexible construction means that these mats will follow the contours of the ground to deliver a highly effective access solution over undulating or sloping ground conditions. Weighing just 86 lbs. (39 kg) at its maximum size and just 21.4 lbs. (9.7 kg) at its smallest, AlturnaMATS® can be easily deployed and maneuvered without any special equipment with the added optional convenience of strategically positioned hand holes. AlturnaMATS® can be connected together using our Turn-A-Links connectors to create a secure trackway or work pad.

\*Load bearing capacity is subject to ground conditions. Sizing is subject to a manufacturing variance of +/- 5%.

# Specifications

Model No	AM48
UPC	812542020626
Brand	Checkers Safety™
Color	Black
Quantity Included	1
Pallet Quantity	40
Load Capacity	240,000 lbs or 120 Tons
Load Capacity	120
Length (Inches)	96
Width (Inches)	48
Height (Inches)	0.72
Surface	Tread on both sides
Hand Holes	No

## Prop 65

**⚠️WARNING:** This product can expose you to chemicals including Carbon Black, which is known to the State of California to cause cancer and birth defects or other reproductive harm. For more information go to [www.P65Warnings.ca.gov](http://www.P65Warnings.ca.gov).