



## 44-2106 - 6" Spats

The Golden Brown leather clothing line is Weldas' quality leather clothing line constructed with select split cowhide. Garments are heat and abrasion resistant to withstand general welding applications and sewn with KEVLAR® thread with riveted seams at major stress points for maximum durability.

### Applications

Light / Medium / Heavy Duty Welding, Cutting, Fabrication

### Testing



EN ISO 11611:2015



CLASS 2 / A1+A2

Meets  
ANSI/AWS Z49.1

Under the shoe elastic strap  
provides a secure fit



### Features & Benefits

- Durable, Heat Resistant Split Cowhide
- Riveted and reinforced seams
- Hook & Loop adjustable fit
- Kevlar® sewn

Part #

44-2106


Size

6"

UPC

726223021067

**Clothing type:** *Golden Brown™*

**Trade mark:** 

**Size:** see imprint on the product

**Intended use:**  
**General:**  
This product is intended to be used for all arc welding processes like MMA, MIG/MAG, TIG, micro plasma, spot and gas welding as well as plasma and oxygen cutting, gouging, brazing and thermal arc spraying. Because applications vary, it is the user's responsibility to identify the right product for each application.  
**Identified hazards:**  
With the welding processes of intended use the following hazards are indentified: flames, spatter of molten material, radiant heat as well as short term electrical shock.  
**High voltage:**  
This product protects against short term electrical shock and not against long term high voltages! Welding and cutting machines can cause these so follow the safety instructions of the machines used as well! When there is an increased risk of shock or electrical live parts additional electrical isolation will be required as is indicated under 6.10 of the EN11611 for protection against live electrical conductors up to 100 V = (DC).  
**Body protection in all positions:**  
This product protects in certain positions of working and welding. It could be possible that extra protection products are required. It is the responsibility of the user to identify that.  
**Protection of aprons:**  
In case an apron is used the apron should, at least, protect the user from seam side to seam side  
**Additional garments:**  
Additional garments shall meet at least Class 1 of the EN ISO 11611:2015.  
For bib and braces: It has to go in combination with a jacket or a garment that covers the arms, torso and neck.  
For apron: It has to go in combination with a jacket and trousers or with garments that cover the arms, torso, neck and legs.  
For jackets: It has to go in combination with trousers or with a garment that covers the legs.


**Improper use:**  
**Level of protection:**  
The level of protection will be reduced if the welders protective clothing is contaminated with flammable materials.  
**Level of oxygen:**  
Increase of oxygen in the air will reduce considerably the protection of the welders protective clothing against flame. Care should be taken when welding in confined places. Air enriched with oxygen will be dangerous!  
**Electrical isolation:**  
The electrical isolation provided by the clothing will be reduced when the clothing is wet, dirty or soaked in sweat.  
**Use of 2-piece clothing:**  
When 2-piece clothing is used both items shall be worn together to provide the specified level of protection  
**Additional body protection during welding:**  
Additional body protection used with this product during welding must meet the appropriate EN standard for welding hazards.  
**Limitations for use:**  
This flame retardant cotton / leather work clothing to be used for general labour activities as well as welding. User has to see to it that all closures are closed specially for use with welding applications and the choice of the right size. If molten metal stick to the clothing, the user needs to remove the clothing immediately. The user needs to wear the bib and brace always in combination with a welding jacket. The welding jacket 33-3060 can only be worn with an extra neck protector. The additional protective garments (apron, sleeves, spats) should only be worn with the welding suit. The spats should be worn over welding shoes. If the user observes symptoms similar to sunburn, UV radiation come through the product. In that case, the product needs to be repaired or replaced. The user should think about it that there might be more protective layers needed in the future.

**Materials used:**  
Side split cowhide in combination with 305 gr./m<sup>2</sup> flame retardant fabric (44-5530 + 44-5600: grain cow leather) is used with 3 ply KEVLAR® for manufactu-ring this product as well as current isolated push buttons and hook and loop fastening materials for the closures and reinforcements.  
DuPont™ and KEVLAR® are trademarks or registered trademarks of E.I.duPont de Nemours and Company.

**Health information:**  
The pH, Chromium (VI) and PCP levels of all materials have been tested and meet CE health standards. Coloring:  
**Washing, drying and ironing:**  
No washing, tumble drying and ironing is allowed.  
**Storage:**  
Store dry and at temperatures over 5° Celcius. Do not stack higher than 5 cartons on 1 pallet.  
**Ageing:**  
If washing, drying and ironing has been applied (which is not advised), or not stored according to the above instruction, the ageing of this product will be influenced negatively.

**Warrantee:**  
This product is warranted against manufacturing defects.  
If the product can be repaired, it needs to be done by the manufacturer.  
**Remove:**  
Once this product can't be used anymore, it is the responsibility of the user to remove this product in an environmental way. Disposal according to local regulations.  
**Durability:**  
The service life depends on the degree of wear and use intensity in the respective application areas and is max. 60 months after manufacturing date.  
The date of manufacture is indicated on a label at the inside of the product.  
**Climate according to clause 6.10:**  
Conditioning and testing of the samples was carried out at a temperature of (20 ±2) °C and relative humidity of (85 ± 5) %.

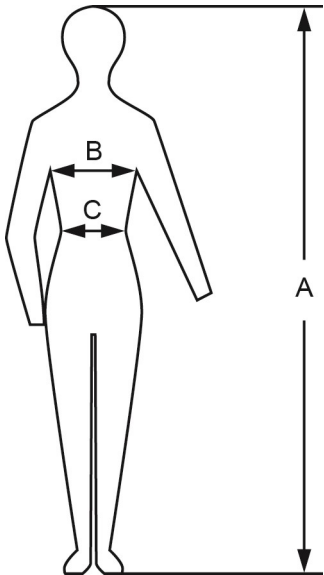
**The following explains the pictogram marked on this product:**



**General safety requirements**

Subclause	Requirement	Class 1	Class 2
6.2	Tensile strength: woven outer textile material Tensile strength: leather	400 N 80 N	400 N 80 N
6.3	Tear strength: woven outer textile material Tear strength: leather	15 N 15 N	20 N 20 N
6.4	Burst strength: test area of 7,3 cm <sup>2</sup> Burst strength: test area of 50 cm <sup>2</sup>	200 kPa 100 kPa	200 kPa 100 kPa
6.5	Seam strength: textile material Seam strength: leather	225 N 225 N	225 N 225 N
6.6	Dimensional change of woven textile materials Dimensional change of knitted textile materials	≤ ± 3 % ≤ ± 5 %	≤ ± 3 % ≤ ± 5 %
6.7	Flame spread Procedure A - mandatory Procedure B - optional	ISO 15025, Procedure A (surface ignition) ISO 15025, Procedure B (edge ignition) No specimen shall permit any part of the lowest boundary of any flame to reach the upper or either vertical edge. No hole formation <sup>a</sup> No flaming or molten debris Mean afterflame ≤2 s Mean afterglow ≤2 s	ISO 15025, Procedure A (surface ignition) ISO 15025, Procedure B (edge ignition) No specimen shall permit any part of the lowest boundary of any flame to reach the upper or either vertical edge. No hole formation <sup>a</sup> No flaming or molten debris Mean afterflame ≤2 s Mean afterglow ≤2 s
6.8	Impact of spatter	15 drops	25 drops
6.9	Heat transfer (radiation)	RHTI 24 W ≥ 7,0	RHTI 24 W ≥ 16,0
6.10	Electrical resistance	> 10 <sup>5</sup> Ω	> 10 <sup>5</sup> Ω
6.11	Requirements for leather: fat content	≤ 15 %	≤ 15 %

<sup>a</sup> For ISO 15025:2000, Procedure B, this requirement is not applicable



	S	M	L	XL	XXL	XXXL	XXXXL
	44	48	52	56	60	64	66
A	166-170	171-176	177-182	183-187	188-192	193-196	197-200
B	98	100	112	124	136	148	160
C		90-98*	96-104*	98-120*	106-132	108-144	114
* = art.nr. 44-2600							

44-2136	↑ ↓	91 cm.	↔	60 cm.
44-2142	↑ ↓	107 cm.	↔	60 cm.
44-2142 W	↑ ↓	107 cm.	↔	80 cm.
44-2828	↑ ↓	71 cm.	↔	56 cm.
44-2836	↑ ↓	91 cm.	↔	56 cm.



Attention: Declaration of conformity, test report, certificate, manual: [www.weldas-ce.com](http://www.weldas-ce.com)

Weldas gloves and clothing have been tested and certified at Eurofins Textile & Testing Spain, C/ German Bernácer 4, 03203 Elche (Alicante), Spain (EU no. 2865).

Address information Weldas:

Weldas Europe B.V. Blankenweg 18 4612 RC Bergen op Zoom The Netherlands e-mail: [europa@weldas.eu](mailto:europa@weldas.eu)